

NOT PROTECTIVELY MARKED

Policing Domestic Abuse.



Damian Pettit

DCI Protecting Vulnerable People Department.

Domestic Abuse Definition



'Any incident or pattern of incidents of controlling, coercive or threatening behaviour, violence or abuse between those aged 16 or over who are or have been intimate partners or family members regardless of gender or sexuality. This can encompass but is not limited to the following types of abuse: psychological, physical, sexual, financial and emotional'

Domestic Abuse Strategic Context

- Priority for Government / Police Service
- Broader holistic Partnership challenge
- Alliance Vision is built around 'Protection from Harm'
- Increased focus on most vulnerable- Investment.
- Implementation of PVP Model is to be complete by July 2014.

Domestic Abuse Prevalence

- Only about 10% of all incidents of domestic violence are reported to the police.
- One domestic violence call to police every minute in the UK.
- 85-95% of victims are women.
- Over 50% of all Domestic Abuse relationships have children exposed within.
- 1 in 4 people will be victim of Domestic abuse at some point in their life.
- The estimated national total cost of domestic violence to society in monetary terms is £23 billion per annum.



Warwickshire
POLICE



West Mercia
POLICE

West Mercia Police Performance



- Calls for assistance

In West Mercia, domestic abuse accounts for 5% of calls to the police for assistance. Of these calls, 20% were from repeat victims.



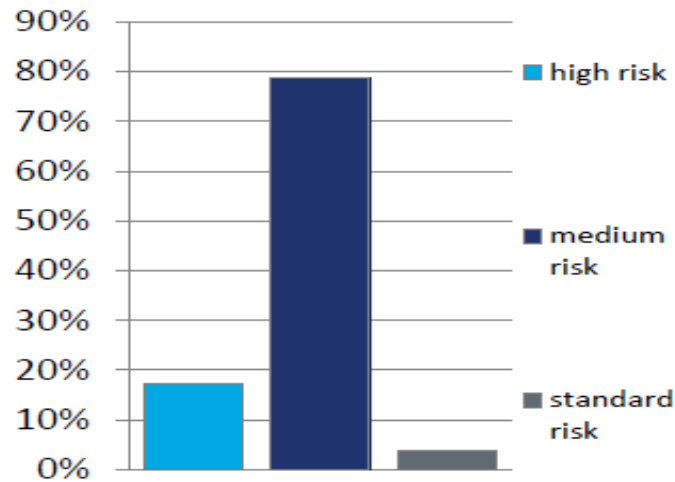
Warwickshire
POLICE



West Mercia
POLICE

Risk levels

Risk levels



Risk levels:

On 23 October 2013 West Mercia had 402 active domestic abuse cases; 17% were high risk, 79% were medium risk, and 4% were standard risk.



Warwickshire
POLICE



West Mercia
POLICE

NOT PROTECTIVELY MARKED

Arrest rate



Arrests

For every 100 domestic abuse crimes recorded, there were 60 arrests in West Mercia. For most forces the number is between 45 and 75%

Outcome



West Mercia recorded 4,859 domestic abuse related crimes for the 12 months to the end of August 2013. Of these crimes, 41% resulted in a charge, 13% resulted in a caution and, 6% had an out of court disposal, for example, a fixed penalty notice for disorderly conduct.




Warwickshire
POLICE



West Mercia
POLICE

Case Study

- Jane was subjected to horrendous injuries and abuse by her longstanding partner.
 - There were two young children in the family.
 - Jane was 'in the cycle' and was reluctant to leave the relationship.
 - A range of multi-agency tactics employed to safeguard, support and remove her and her children from this situation.
 - Breaches of RO, using level of assault as 'bad character';
 - Monitoring whilst in prison;
 - Cross-border, multi-agency management
 - Strong emphasis on the multi-agency management of the perpetrator
 - New life formed with a degree of anonymity and safety.
- 

Domestic Abuse delivery plan

- Not complacent, continually seeking to improve
- Build on the good work already undertaken
- Domestic Violence Disclosure Scheme
- Domestic Violence Protection Order
- High-profile multi agency campaigns
- Offender Management Focus
- Ongoing development with Harm Assessment Units and Risk Assessor roles
- Learning & Development for staff education
- Capture HMIC recommendations, supporting the West Mercia delivery plan

DVDS / DVPOs

- Approx 40 'Right to Ask' across Alliance
- 3 disclosures under 'Right to Ask'
- 'Right to Know' being routinely considered
- 2nd June Warwickshire, Telford and Shropshire roll-out of DVPOs
- Continually considered and authorised in South Worcester, North Worcester and Hereford


HMIC Inspection 'Everyone's Business'

- Part of range of Public Protection Inspections (CSE / Child Abuse / Missing)
- Alliance perspective but separate Force Reviews – wide ranging
- Adverse comment around the national Policing response from Government and Media post publication
- National Strategic Domestic Abuse Task Group implemented

West Mercia key areas

- Quality assurance
- Training
- ACPO definition: education and training
- Use of body worn video
- Crime allocation with specialist support
- Risk assessment monitoring and evaluation
- Supervision of Risk Management Plans and signposting
- IDVA service provision and integration
- DA problem profile to inform police response
- Best use of new powers

Domestic Abuse Opportunities

- To build upon strong partnership base
 - To maximise further opportunities (e.g. perpetrator focus).
 - Further investment – IDVAs / MARAC / IT
 - Learning & Development – Addressing the Culture and knowledge base.
 - Continue to demonstrate effective working
- 

Challenges

- Declining resource base through austerity
 - Reduction in provision of specialist voluntary and statutory sector partners
 - Increase in reporting levels due to an increase in confidence in the police and other specialist voluntary sector partners
 - Increase in work load due to new and innovative legislative measures of protection for victims
 - Heightened media and awareness through police and partner agencies
 - Consistency and sustainability.
- 